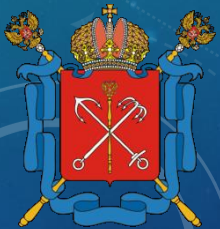


# **SAINT-PETERSBURG: PERSPECTIVE COOPERATION**



**GOVERNMENT OF SAINT-PETERSBURG**

**COMMITTEE FOR INDUSTRIAL POLICY AND INNOVATIONS**

# ST PETERSBURG GEOGRAPHIC POSITION



# SAINT PETERSBURG IS...



... A CITY OF UNESCO WORLD HERITAGE STATUS

... ONE OF THE MOST VISITED CITIES IN EUROPE: OVER 7 MLN. TOURISTS ANNUALLY



... 2nd LARGEST IN EUROPE BY CITY AREA, 4th LARGEST BY POPULATION

... A CONNECTION HUB BETWEEN RUSSIA AND EUROPE



... THE LARGEST SEA PORT IN RUSSIA



# WHY SAINT PETERSBURG IS ATTRACTIVE FOR BUSINESS?

**1**

- High education potential, qualified labor

**2**

- Growing industrial potential

**3**

- Developed innovation infrastructure

**4**

- Positive experience of foreign investors

# ECONOMIC DEVELOPMENT

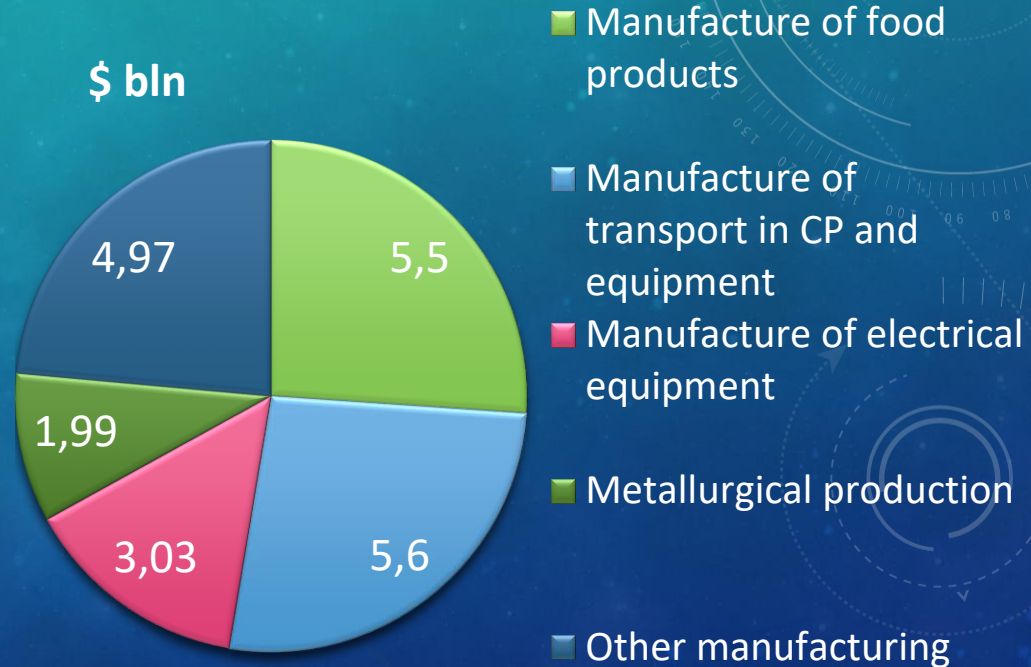
## GROSS REGIONAL PRODUCT

\$ bln



## The volume of goods shipped by type of activity 2016 (excluding oil products )

\$ bln



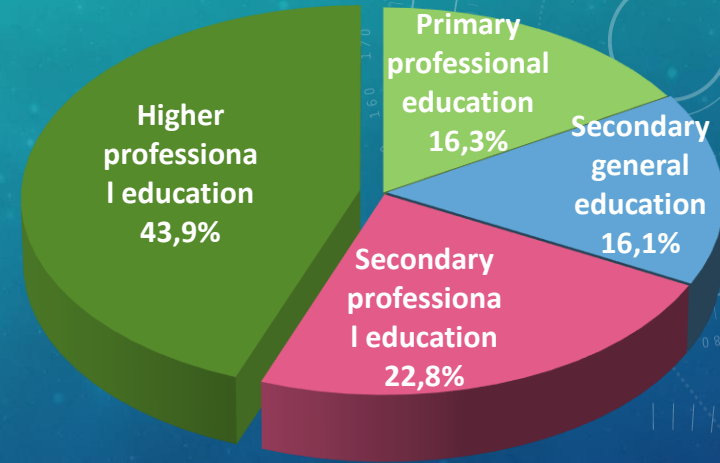
# HIGHLY QUALIFIED LABOR FORCE

## EDUCATION POTENTIAL:

- **82 universities.**
- each **10th** citizen is a **student.**
- over **90 tsd. graduates** annually.
- **13 Nobel laureates** live in Saint Petersburg.
- over 40% of city's population are **highly educated**

## LABOR POTENTIAL:

- **3 mln. people** – economically active population (January-Dec 2016).



# LEADING INDUSTRIAL CLUSTERS



**AUTOMOBILE**



**PHARMACEUTICALS & HEALTHCARE**



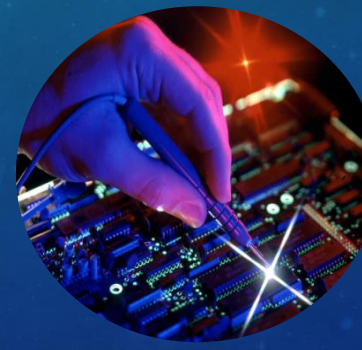
**SHIPBUILDING**



**POWER MECHANICAL ENGINEERING**



**IT**



**RADIO ELECTRONICS**

# SHIPBUILDING CLUSTER



United Shipbuilding Corporation



Northern Shipyard



Baltic Shipyard



Admiralty Shipyards

43 shipbuilding companies with over 50 000 employers

Shipbuilding cluster produces 50% of all defense industry output in Saint-Petersburg





# PHARMACEUTICALS AND HEALTHCARE

158 companies

- including 100 production companies.

Total investments

- over \$1 bln.

Labor resources

- St.Petersburg State Chemical Pharmaceutical academy,  
St.Petersburg State Medical university,  
St.Petersburg State Medical academy,  
5 research institutions.

Cluster demands:

- R&D suppliers, new GMP pharmaceuticals producers.



# POWER ENGINEERING



**POWER MACHINES**

POWER MACHINES is a global power engineering company – one of the world's top-ten industry leaders in terms of installed-equipment volume.

Power Machines are implementing projects in Germany.



**ZVEZDA-ENERGETIKA**

ZVEZDA-ENERGETIKA is specialized in comprehensive power solutions for gas and oil industries, industrial systems and housing infrastructure.

Have partners in Germany.

# AUTOMOBILE CLUSTER



Annual car production:

- Up to 400 tsd.

Labor resources:

- 8000 tsd.

Cars produced in 2016

- 281, 5 tsd. (25-30 % in Russia)

# WELL DEVELOPED INNOVATION INFRASTRUCTURE

High demand  
for innovations

Scientific  
and educational  
potential

Technological  
& Financial  
infrastructure

Developed  
industrial sector

Management  
system

## ST PETERSBURG TECHNOPARK

Business-Incubator "Ingria"



Saint Petersburg Cluster Development  
Centre



Prototyping Center (PC)

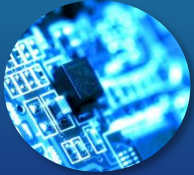


Regional engineering center



# SPECIAL ECONOMIC ZONE

## Priority spheres:



ICT



Pharmaceuticals



Energy



Instrumentation

## Total area:

• 129,4 ha

## Number of residents:

• 42

## Investments by residents in 2016

• \$ 111,2 mln



## Tax benefits

• profits tax, VAT, property tax, etc.



## Preferential rent rates



## Engineering infrastructure



## Free customs zone



Possibility to buy-out the land plot

## SEZ benefits and advantages



# PERSPECTIVE INDUSTRIAL ZONES

Industrial zones cover over 13.6 % of the total city area

More than 60 industrial zones



The directorate for maintenance of industrial projects



Passenger terminal



Seaport



«Pulkovo» airport

— WHSD

— Saint Petersburg Ring Road

# TAX BENEFITS FOR INVESTORS

Investments over  
50 mln rubles  
in high-tech  
products

Investments more  
than 800 mln rubles

Profits tax  
= 13,5 %  
Property tax  
= 0

Law of St. Petersburg  
№ 81-11 «On tax benefits»



# COMPANIES LOCATED IN ST.PETERSBURG



HYUNDAI



TOYOTA

Johnson  
Controls



NISSAN



MAN



intel



hp



kraft foods

P&G

Procter & Gamble



PHILIPS

Fazer



NOVARTIS

KNAUF



SCANIA



ORKLA



ALCAN

B/S/H/

EMC<sup>2</sup>



ORACLE



pepsi

Coca-Cola

BALTIKA

breweries

TECHNOPOLIS



Unilever



WRIGLEY

OTIS

Alcatel-Lucent



BRITISH AMERICAN  
TOBACCO



TEKNOS



KNORR-BREMSE



The background is a blue gradient with various technical diagrams. On the left, there are several circular gauges with numerical scales. One gauge has a scale from 140 to 260 in increments of 10. Another gauge has a scale from 150 to 210 in increments of 10. There are also smaller circular diagrams with arrows indicating clockwise or counter-clockwise rotation. The overall aesthetic is technical and futuristic.

**Welcome to St Petersburg!**